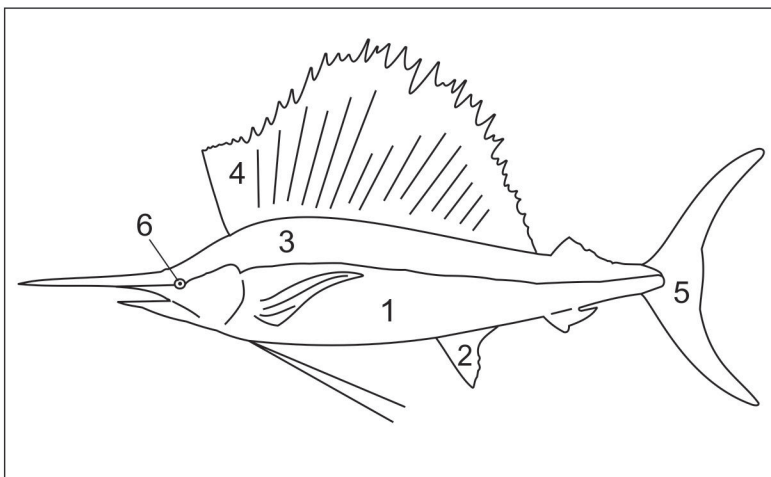


Instructions for the Sailfish Inlay Kit



Including the curly maple background barrel, there's a total of 7 pieces in this inlay kit. Check to make sure all of the pieces are in the kit and all are in good shape. We'll start by inserting the brass tube from your pen kit into the maple barrel for support while inserting the inlay kit pieces. Starting with the #1 holly body piece, assemble the pieces in numerical order securing with the supplied elastic bands as needed. Insert Piece #3 pointed end first and #4 top jagged edge first. Insert Piece #5 by sliding the top and bottom ends of the fins first and then lower the piece down into the body. Once all pieces are in place, carefully remove the brass tube and brush all of the seams with thin CA (Cyanoacrylate) glue using a disposable artists paint brush.

Now we'll glue the brass tube into the blank. Check the fit of the tube as you might have to sand the inside of the blank for it to fit. Wrap a small dowel with 100G sandpaper (or get one of the new Sanding Mandrels from our website) and sand the inside of the barrel until the tube fits smoothly. Scuff the tube up with sandpaper and then glue it in the barrel using 2 part epoxy. Make sure the tube is centered so the sailfish will be centered when the ends are trimmed flush with the brass tube. Once the glue has cured, sand the ends flush with the brass tube using a belt or disc sander. Don't use a barrel trimmer. Now you can mount the blank on the lathe for final turning and finishing. Apply whatever



finish you're comfortable with as they all work well with these inlay kits. E-mail me at kallenshaan@cox.net with any thoughts or ideas regarding this or any of our other kits.


Kallenshaan Woods
Laser Cut Inlay Pen Kits

www.kallenshaanwoods.com