

Instructions for the Large Mouth Bass Pen Inlay Kit (Sierra and PSI Fly Fishing Pen Kits)



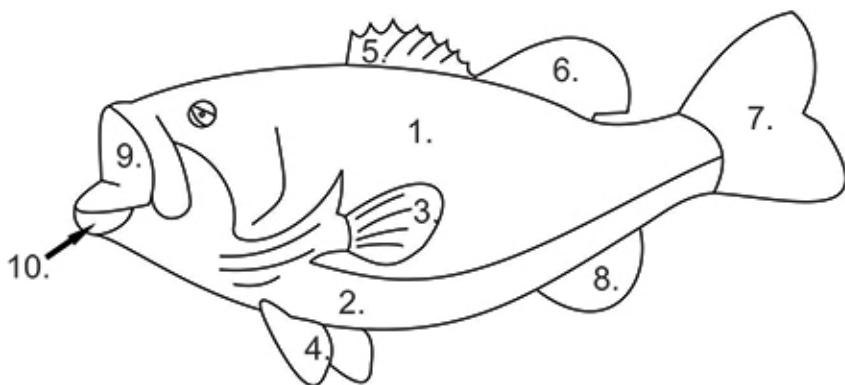
We're going to start by making sure all pieces are included and none are broken. If there are any missing or broken pieces, call or e-mail Ken at (702)523-9236 or kallenshaan@cox.net to get replacements. Even if you didn't purchase your inlay kit directly from Kallenshaan Woods, use this contact info as our vendors don't carry replacement parts. Also, if a piece doesn't seem to fit well, use this contact info for a replacement or solution. Don't glue in a piece if it doesn't look right.

First we're going to slide the brass tube from your pen kit (not included with the inlay kit) into the curly maple background blank that came with the inlay kit. Next we'll start assembling the pieces that make up the bass.

Start by putting the green body piece (#1) and the holly body piece (#2) together and then fitting this assembly into the recess in the curly maple barrel. Secure these pieces using 2 of the supplied rubber bands. See Pic.1. Slide the brass tube out of the maple barrel and apply a few drops of thin CA glue to hold everything in place. Next we'll fit the tail (#7), and the two top fins (#5 and #6) into position and secure them with thin CA glue. Next come pieces #3, #4, and #8. Glue these in place. Once the CA is dry, slide the brass tube into the maple barrel from the left side (bass' head) just past the mouth of the bass. Next, position the mouth (#9) and the bottom lip (#10). Slide out the brass tube and secure these remaining two pieces with thin CA glue. Now go back and apply thin CA to all of the seams making sure no seams have been missed.



Now we'll glue the brass tube into the blank. Check the fit of the tube as you might have to lightly sand the inside of the blank for a good fit. If you do, wrap a small dowel with 100G sandpaper and sand the inside of the barrel until the tube fits smoothly. Use 2-part epoxy to glue in the brass tube. Make sure the tube is perfectly centered so there's the same amount of space on either end. Once the glue has cured, sand the ends flush with the brass tube using a belt or disc sander. Don't use a barrel trimmer. Now you can mount the blank on the lathe for final turning and finishing. Apply whatever finish you're comfortable with as they all work well with these inlay kits. E-mail me at kallenshaan@cox.net with any thoughts or ideas regarding this or any of our other kits.



Apply whatever finish you're comfortable with as they all work well with these inlay kits. E-mail me at kallenshaan@cox.net with any thoughts or ideas regarding this or any of our other kits.



Kallenshaan Woods
Personalized Laser Engraving

www.kallenshaanwoods.com