

Instructions for the Rainbow Trout Pen Inlay Kit



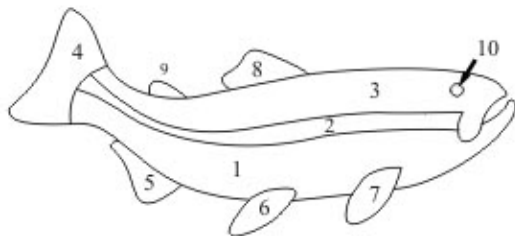
We're going to start the assembly of this kit by scuffing up the brass tube that came with the pen kit with 100G sandpaper. We're then going to slide it into the curly maple background blank that came with the inlay kit. Next we'll start assembling the pieces that make up the trout.

Start by putting the long white holly piece (#1) in place, followed by the thin pink strip (#2) and then the long dark green piece (#3). Make sure you slide the pink piece up forward the head of the trout to eliminate any possible gap. Secure these 3 pieces using 2 of the supplied rubber bands. See Pic. 1. No glue at this time.

Next we're going to place the tail fin (#4) in place followed by the remaining 5 green pieces (#5,6,7,8,9). We're now going to slide the brass tube out from inside the maple barrel. Make sure all the pieces are well seated and then apply thin CA glue to all the seams making sure not to get any glue in the hole for the eye which will be positioned next. Once the CA has cured place the eye (#10) in position while holding the barrel at an angle so the small eye piece doesn't fall through to the inside of the barrel. Apply a small bit of thin CA glue to secure it.



Now we'll glue the brass tube into the blank. Check the fit of the tube as you might have to lightly sand the inside of the blank for a good fit. If you do, wrap a small dowel with 100G sandpaper and sand the inside of the barrel until the tube fits smoothly. Use 2-part epoxy to glue in the brass tube. Make sure the tube is perfectly centered so there's the same amount of space on either end. Once the glue has cured, sand the ends flush with the brass tube using a belt or disc sander. Don't use a barrel trimmer. Now you can mount the blank on the lathe for final turning and finishing. Apply whatever finish you're comfortable with as they all work well with these inlay kits. E-mail me at kallenshaan@cox.net with any thoughts or ideas regarding this or any of our other kits.




Kallenshaan Woods
Laser Cut Inlay Pen Kits
www.kallenshaanwoods.com